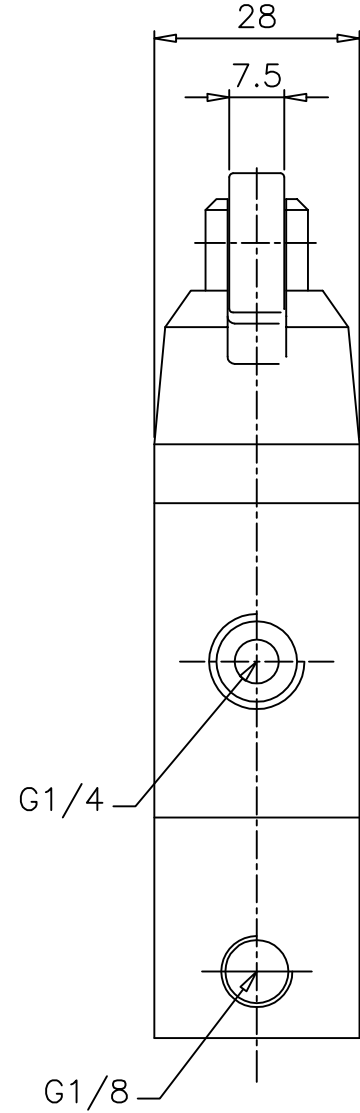
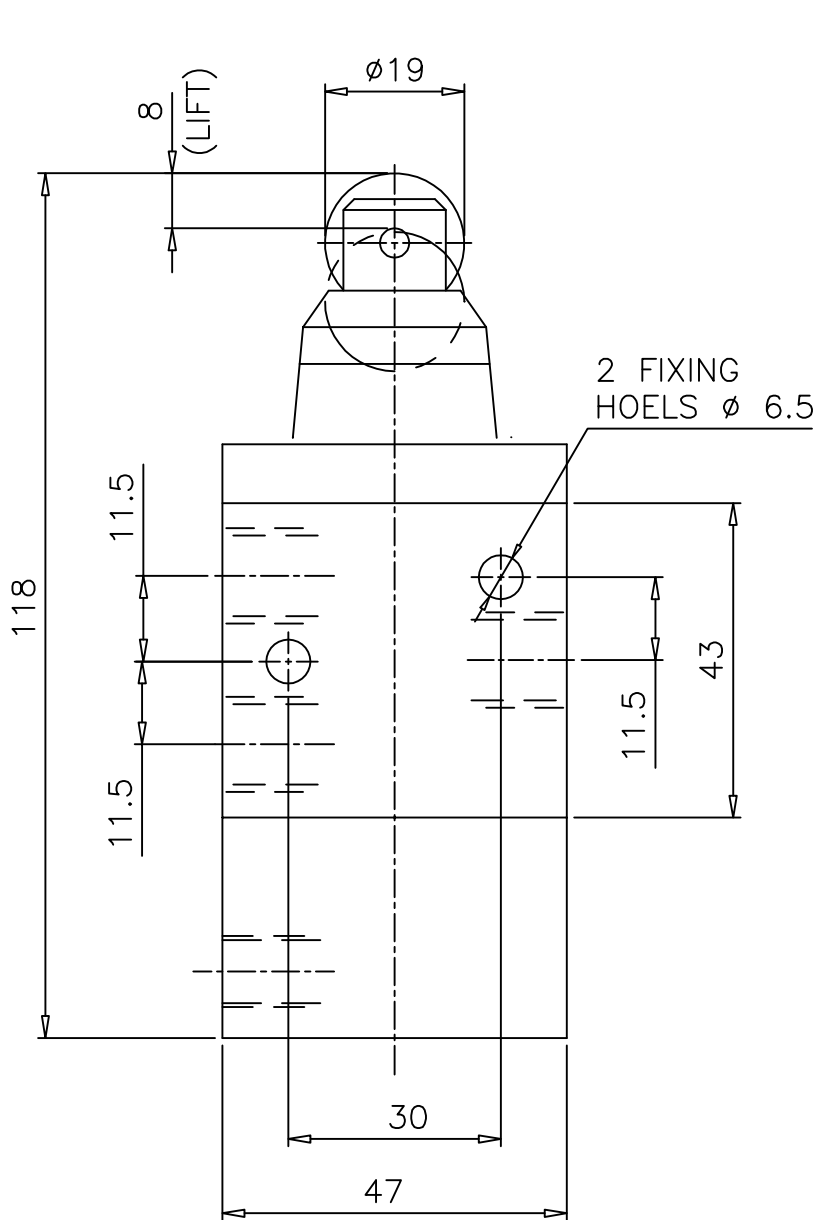
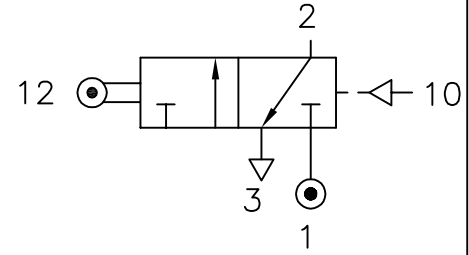


Roller actuated, Pressure reset

Z03 0609 02

Type : 3/2 Spool Valve
 Mechanically actuated
 Port Size : G 1/4
 Operating Pressure : 2-10 bar
 Operating Temperature : +5°C to +70°C
 Operating Force : 13 N
 Reset Pressure : 2 bar min.



ALL DIMENSIONS ARE IN mm

NUCON INDUSTRIES PRIVATE LIMITED
 88 , C.I.E , BALANAGAR ,
 HYDERABAD - 500 037

DRAWN	SREENIVAS.M	16.04.2005
CHECKED		
APPROVED		