

SOLENOID PILOT SET-RESET

End Mounted Miniature Solenoid

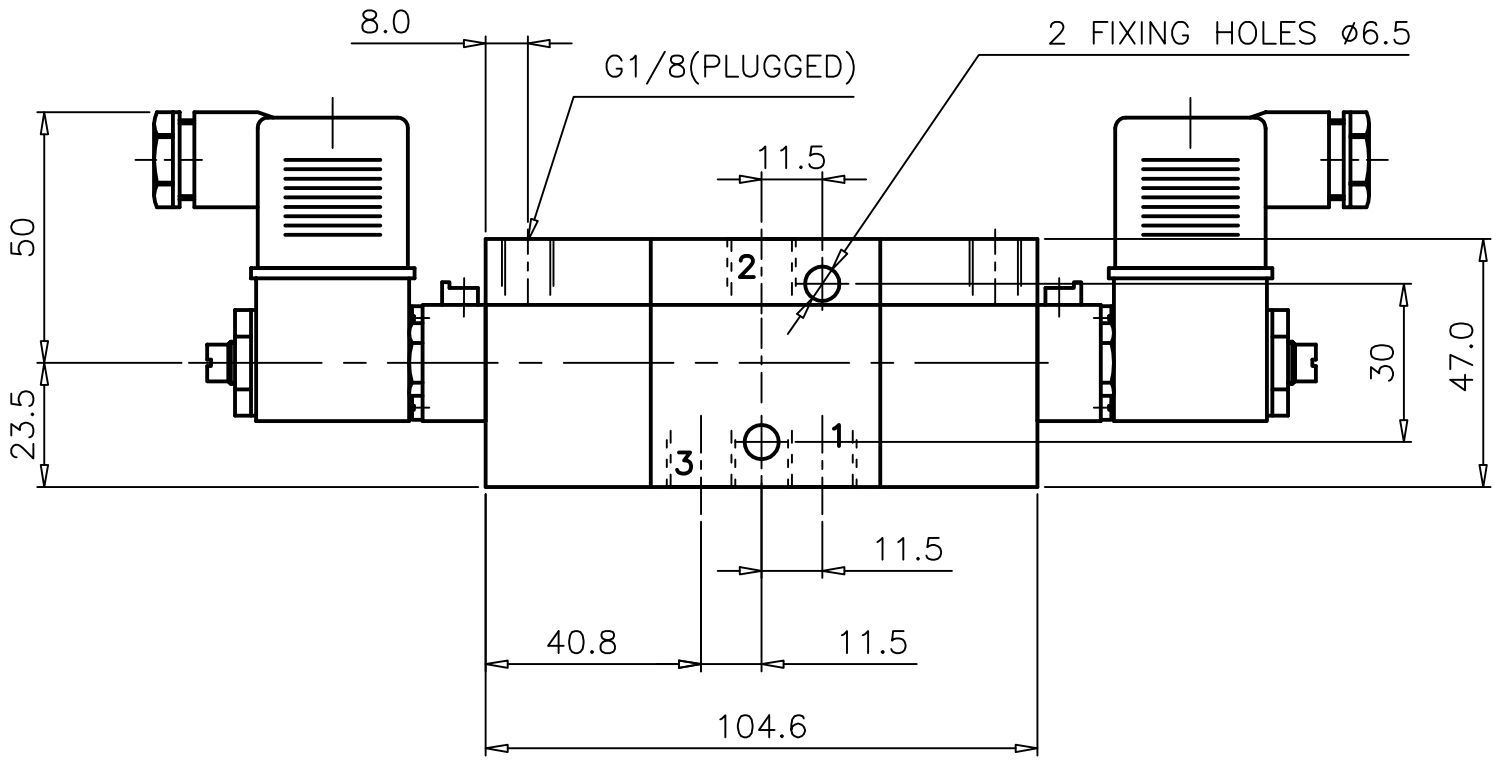
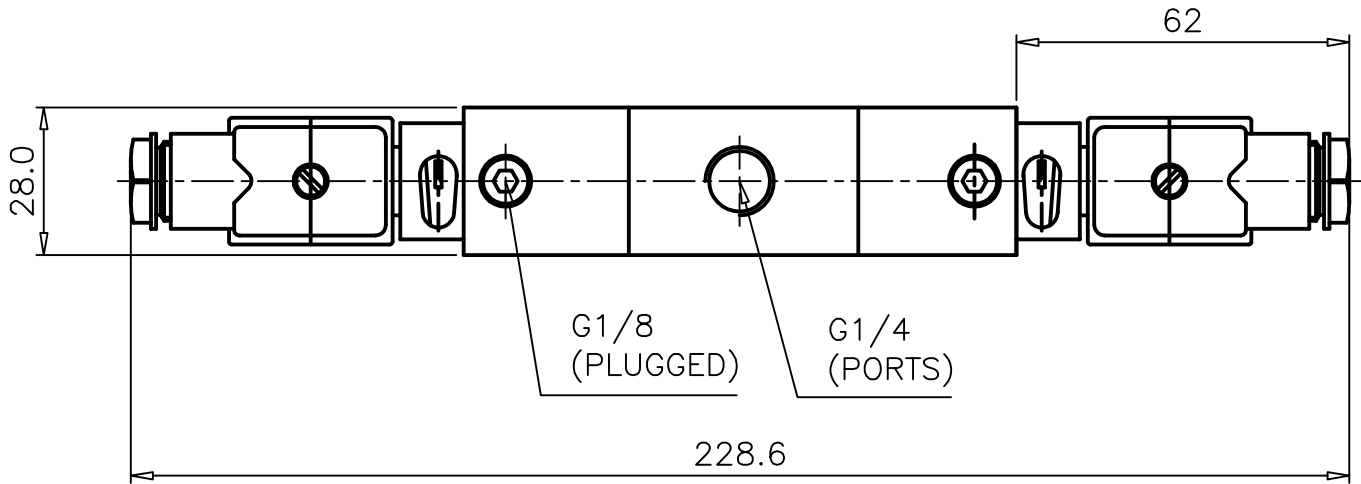
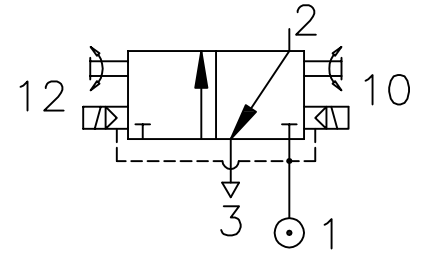
Z14 2838 0M 000

Type : 3/2 Normally closed
Integral pilot supply

Port Size : G 1/4

Operating Pressure : 2-10 bar

Operating Temperature : +5°C to +70°C



* CONSULT OUR TECHNICAL SERVICE FOR LOW PRESSURE AND VACUUM

ALL DIMENSIONS ARE IN mm

NUCON INDUSTRIES PRIVATE LIMITED
88 , C.I.E , BALANAGAR ,
HYDERABAD - 500 037

| | | |
|----------|-------------|------------|
| DRAWN | SREENIVAS.M | 09.05.2005 |
| CHECKED | | |
| APPROVED | | |