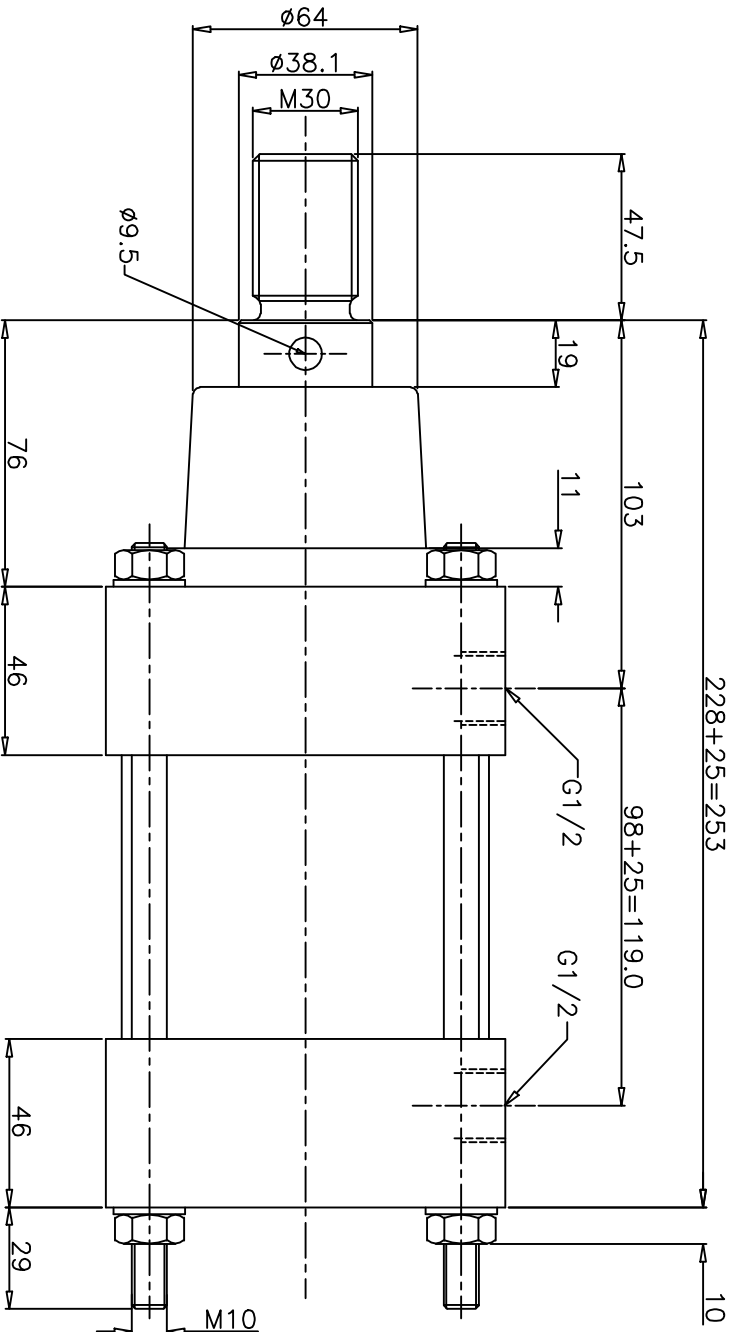
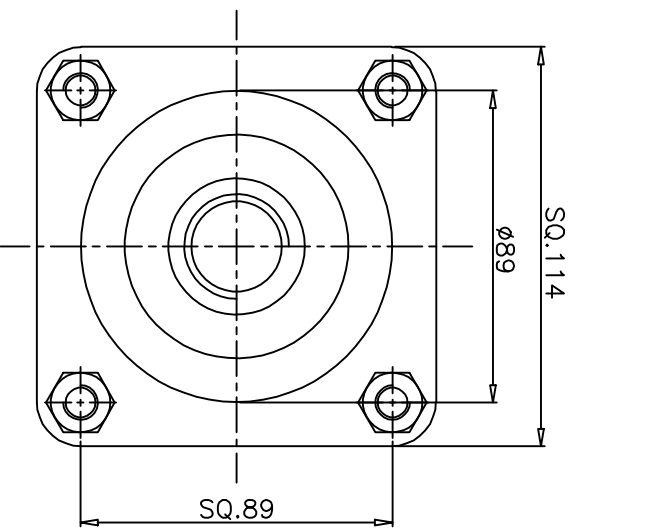


REVISIONS

SCHEDULES:

ALL DIMENSIONS ARE IN mm
DO NOT SCALE THE DRAWING

DRG.No.
ZM/1041/25



TECHNICAL DATA

- 1. CYLINDER TYPE : DOUBLE ACTING HEAVY DUTY CYLINDER
- 2. BORE DIA : 4"
- 3. PISTON ROD DIA : 38.1 (1.5")
- 4. STROKE : 25
- 5. OPERATING PRESSURE : 2 to 17 bar
- 6. OPERATING TEMP. MAX. : + 80°C

MATERIAL OF CONSTRUCTION

- 1. PISTON & END COVERS : CAST IRON
- 2. BARREL : CARBON STEEL WITH HARD CHROME PLATED (ID)
- 3. PISTON ROD : EN8 WITH HARD CHROME PLATED
- 4. O-RING & SEALS : NITRILE RUBBER

NUCON INDUSTRIES PRIVATE LIMITED

ASSEMBLY:		DRAWN: KVMAR		128.11.2008	
4" BORE 25mm STROKE HEAVY DUTY CYLINDER		CHECKED:			
SCALE: 1:1 TITLE: DATA SHEET		APPROVED:			
		DRG.No. ZM/1041/25			
		SHEET		OF	