

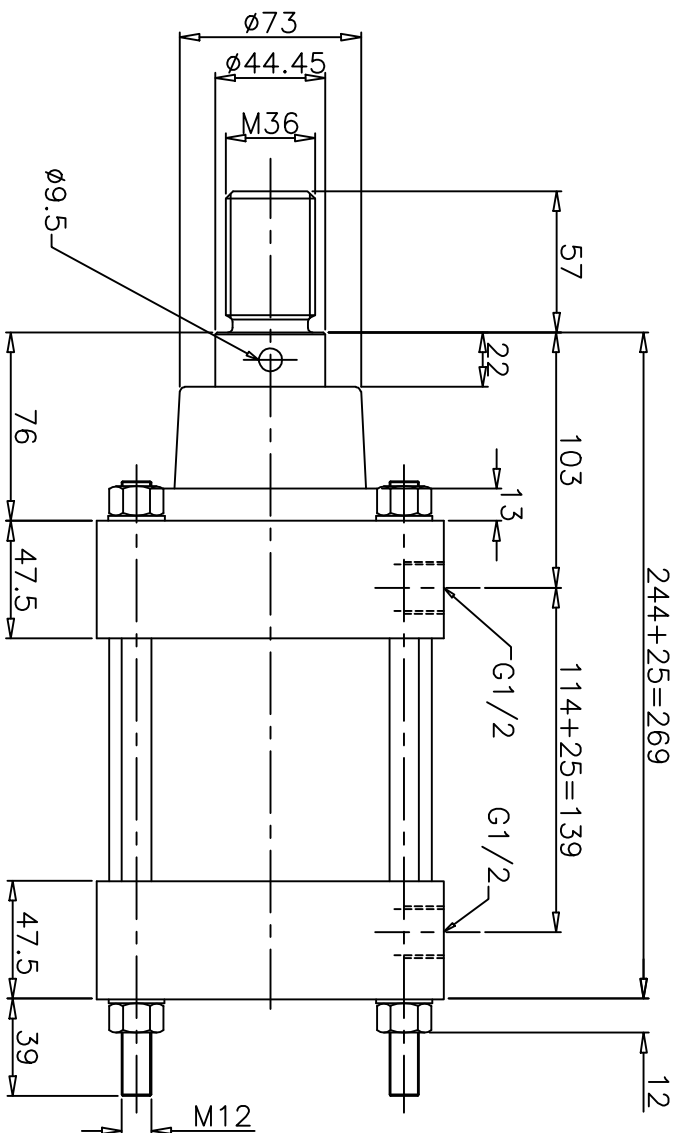
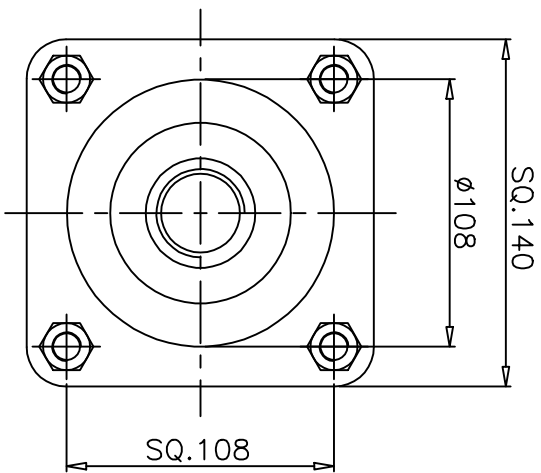
REVISIONS

SCHEDULES:

ALL DIMENSIONS ARE IN mm
DO NOT SCALE THE DRAWING

DRG.No.

ZM/1051/25



TECHNICAL DATA

- 1. CYLINDER TYPE : DOUBLE ACTING HEAVY DUTY CYLINDER
- 2. BORE DIA : 5"
- 3. PISTON ROD DIA : 44.45 (1.75")
- 4. STROKE : 25
- 5. OPERATING PRESSURE : 2 to 17 bar
- 6. OPERATING TEMP. MAX. : + 80°C

MATERIAL OF CONSTRUCTION

- 1. PISTON & END COVERS : CAST IRON
- 2. BARREL : CARBON STEEL WITH HARD CHROME PLATED (ID)
- 3. PISTON ROD : EN8 WITH HARD CHROME PLATED
- 4. O-RING & SEALS : NITRILE RUBBER

NUCON INDUSTRIES PRIVATE LIMITED

ASSEMBLY:

5" BORE 25mm STROKE HEAVY DUTY CYLINDER

DRAWN: V.VINAY 19.11.2008

CHECKED: _____

APPROVED: _____

SCALE: 1:2

TITLE:

DATA SHEET

ZM/1051/25



SHEET _____ OF _____