

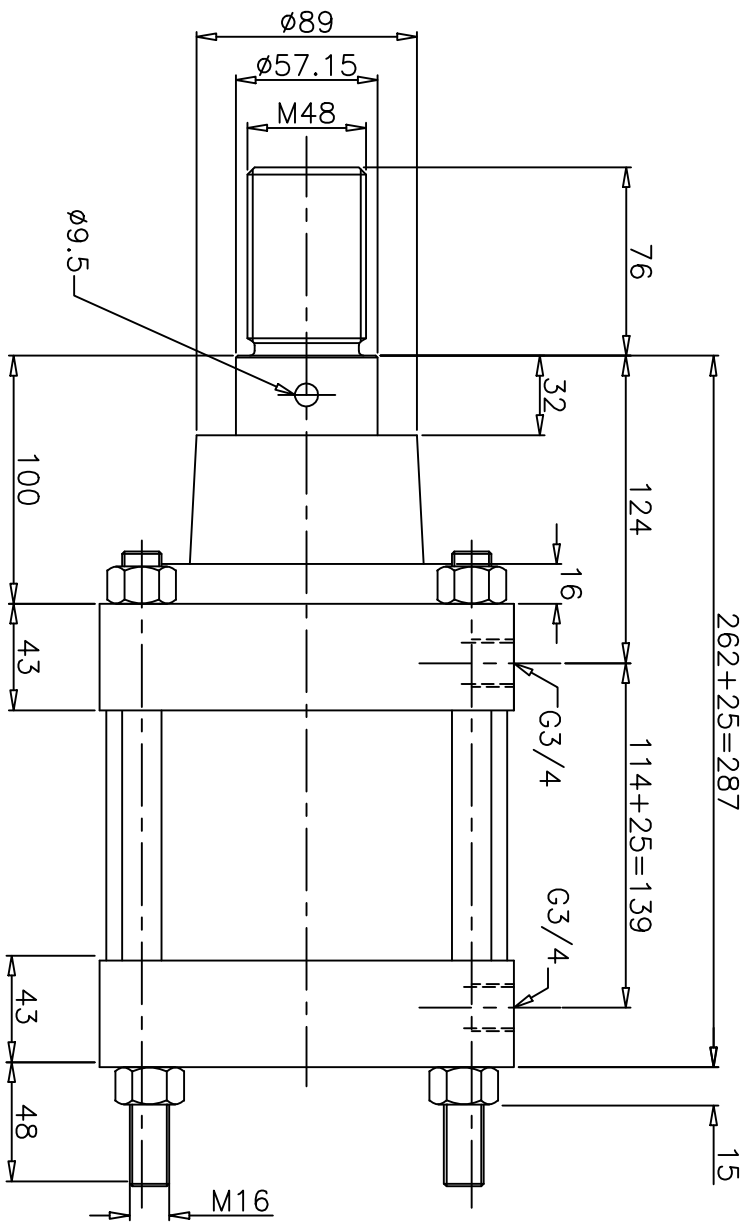
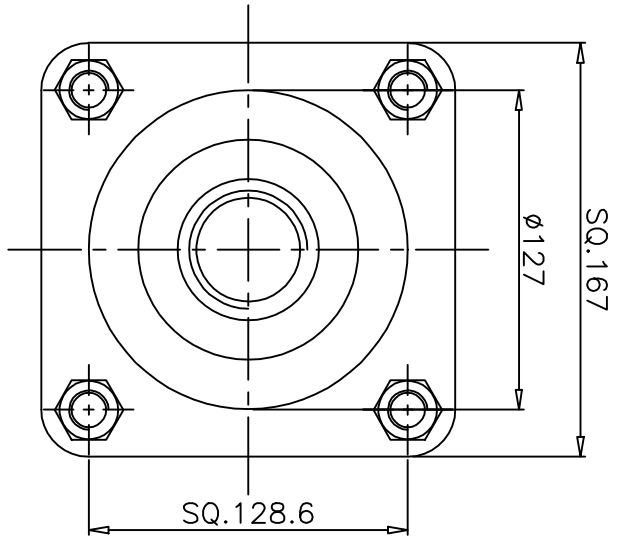
REVISIONS

SCHEDULES:

ALL DIMENSIONS ARE IN mm  
DO NOT SCALE THE DRAWING

DRG.No.

ZM/1061/25



TECHNICAL DATA

- 1. CYLINDER TYPE : DOUBLE ACTING HEAVY DUTY CYLINDER
- 2. BORE DIA : 6" (152.4mm)
- 3. PISTON ROD DIA : 2.25" (57.15mm)
- 4. STROKE : 25
- 5. OPERATING PRESSURE : 2 to 10 bar
- 6. OPERATING TEMP.MAX. : + 80°C

MATERIAL OF CONSTRUCTION

- 1. PISTON & END COVERS : CAST IRON
- 2. BARREL : CARBON STEEL WITH HARD CHROME PLATED (ID)
- 3. PISTON ROD : EN8 WITH HARD CHROME PLATING
- 4. O-RING & SEALS : NITRILE RUBBER

NUCON INDUSTRIES PRIVATE LIMITED

ASSEMBLY:

6" BORE 25mm STROKE HEAVY DUTY CYLINDER

SCALE: 1:2 TITLE:

DATA SHEET

DRAWN: VJINAY 19.11.2008

CHECKED: APPROVED:

DRG.No. ZM/1061/25

SHEET OF