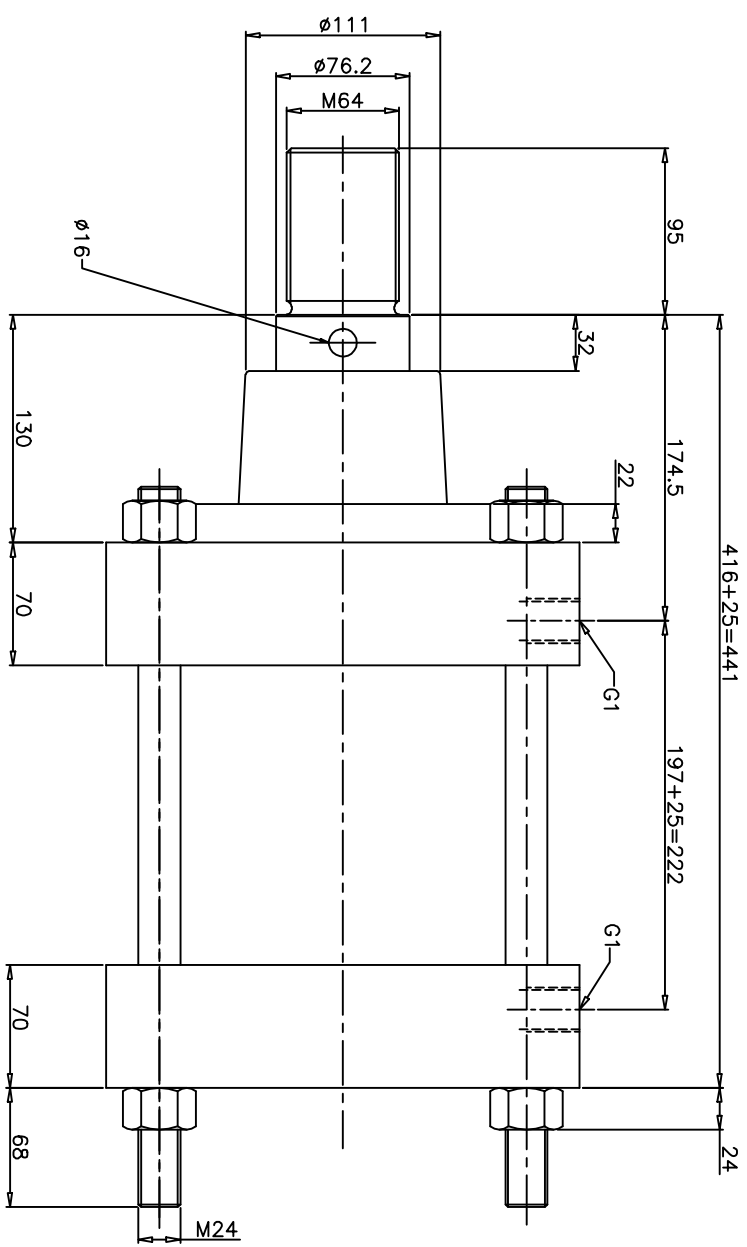
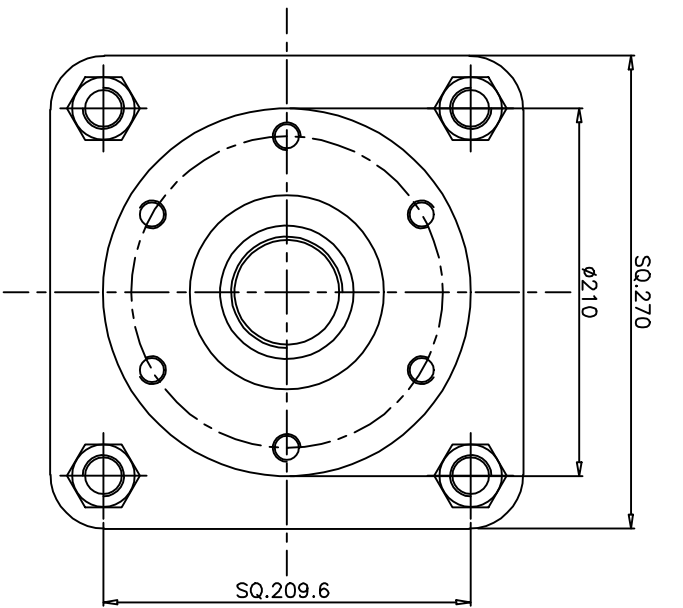


REVISIONS

SCHEDULES:

ALL DIMENSIONS ARE IN mm  
DO NOT SCALE THE DRAWING

DRG.No. ZM/1101/25



**TECHNICAL DATA**

- 1. CYLINDER TYPE : DOUBLE ACTING HEAVY DUTY CYLINDER
- 2. BORE DIA : 10" (254mm)
- 3. PISTON ROD DIA : 3" (76.2mm)
- 4. STROKE : 25
- 5. OPERATING PRESSURE : 2 to 13.5 bar
- 6. OPERATING TEMP. MAX. : + 80°C

**MATERIAL OF CONSTRUCTION**

- 1. PISTON & END COVERS : CAST IRON
- 2. BARREL : CARBON STEEL WITH HARD CHROME PLATED (ID)
- 3. PISTON ROD : EN8 WITH HARD CHROME PLATED
- 4. O-RING & SEALS : NITRILE RUBBER

<p>ASSEMBLY: NUCON INDUSTRIES PRIVATE LIMITED</p>	
<p>SCALE: 1:2</p>	<p>TITLE: DATA SHEET</p>
<p>DRG.No. ZM/1101/25</p>	<p>SHEET 8 OF</p>