

SPRING CENTRALIZED , PRESSURE ACTUATED

ZX3 3407 02

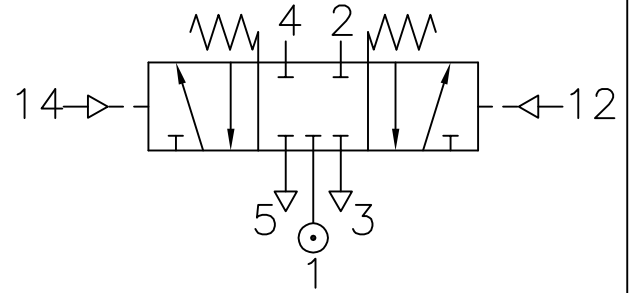
Type : 5/2 Fully sealed
Mid-Position

Port Size : G 1/8

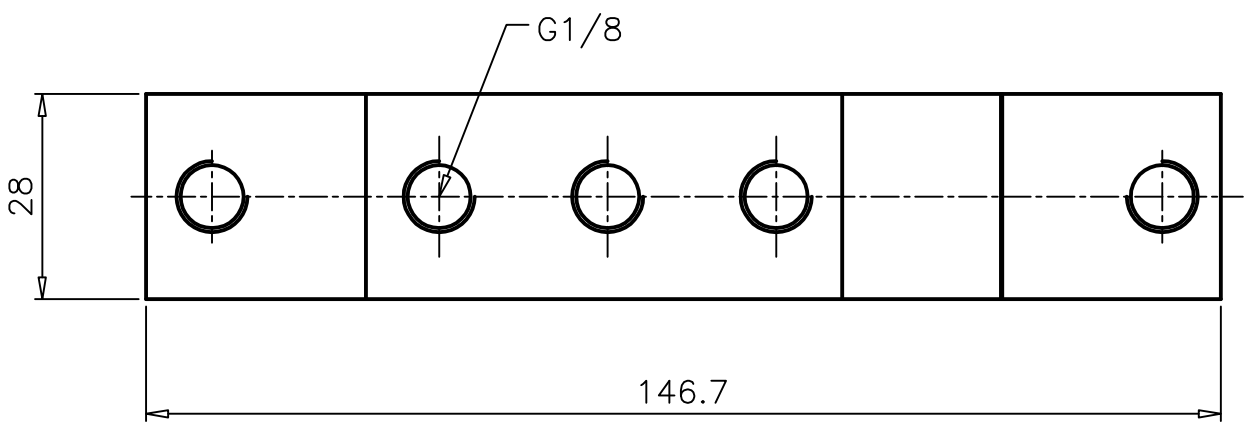
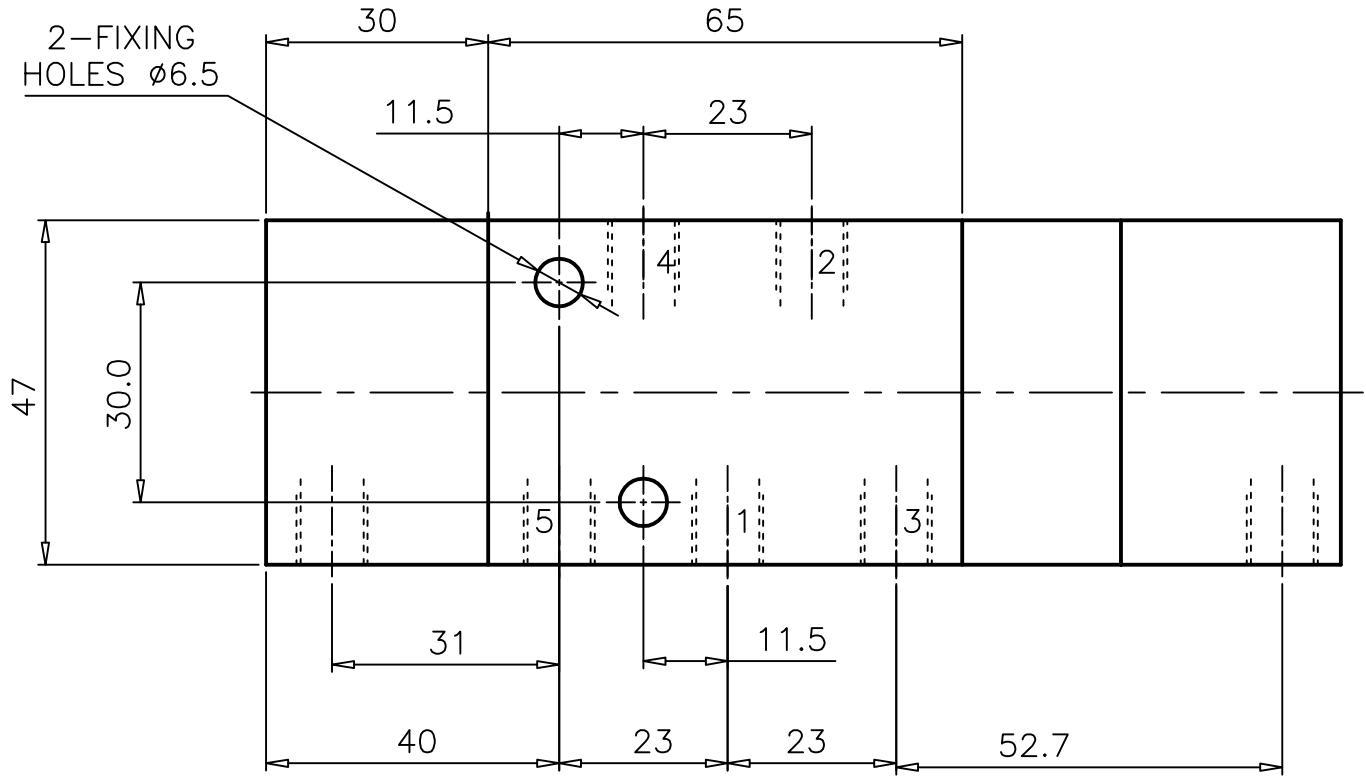
Operating Pressure : 0-10 bar *

Operating Temperature : +5°C to +70°C

Pilot Pressure : 3-10 bar



* Consult our Technical service for use below +2°C



* CONSULT OUR TECHNICAL SERVICE FOR LOW PRESSURE AND VACUUM

ALL DIMENSIONS ARE IN mm

DRAWN	SREENIVAS.M	16.04.2005
CHECKED		
APPROVED		