

# SPRING CENTRALIZED , PRESSURE ACTUATED

## ZX3 3447 02

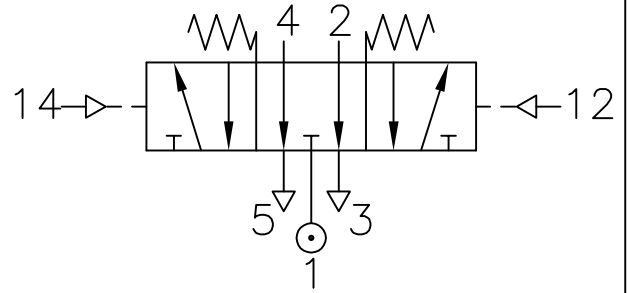
Type : 5/3 Supply sealed  
Mid-Position

Port Size : G 1/8

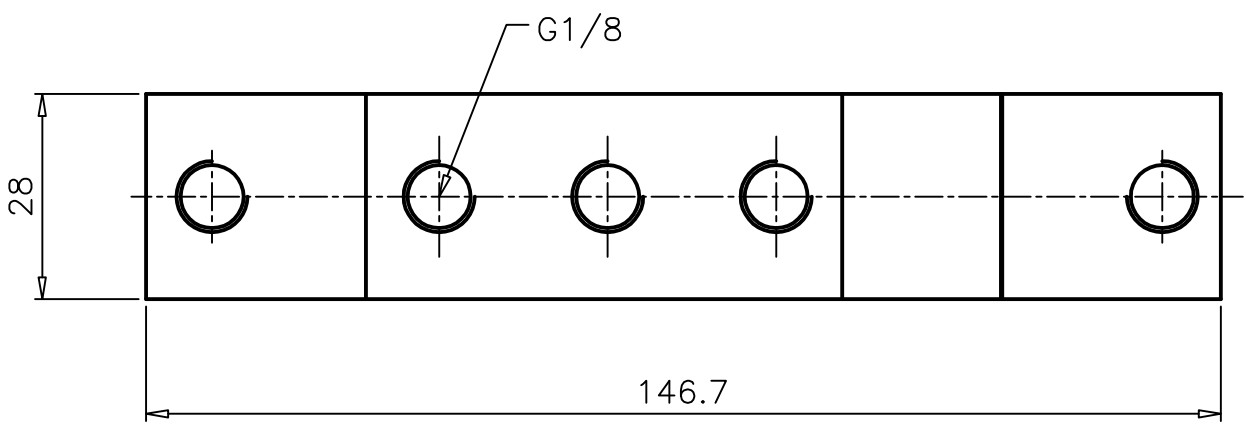
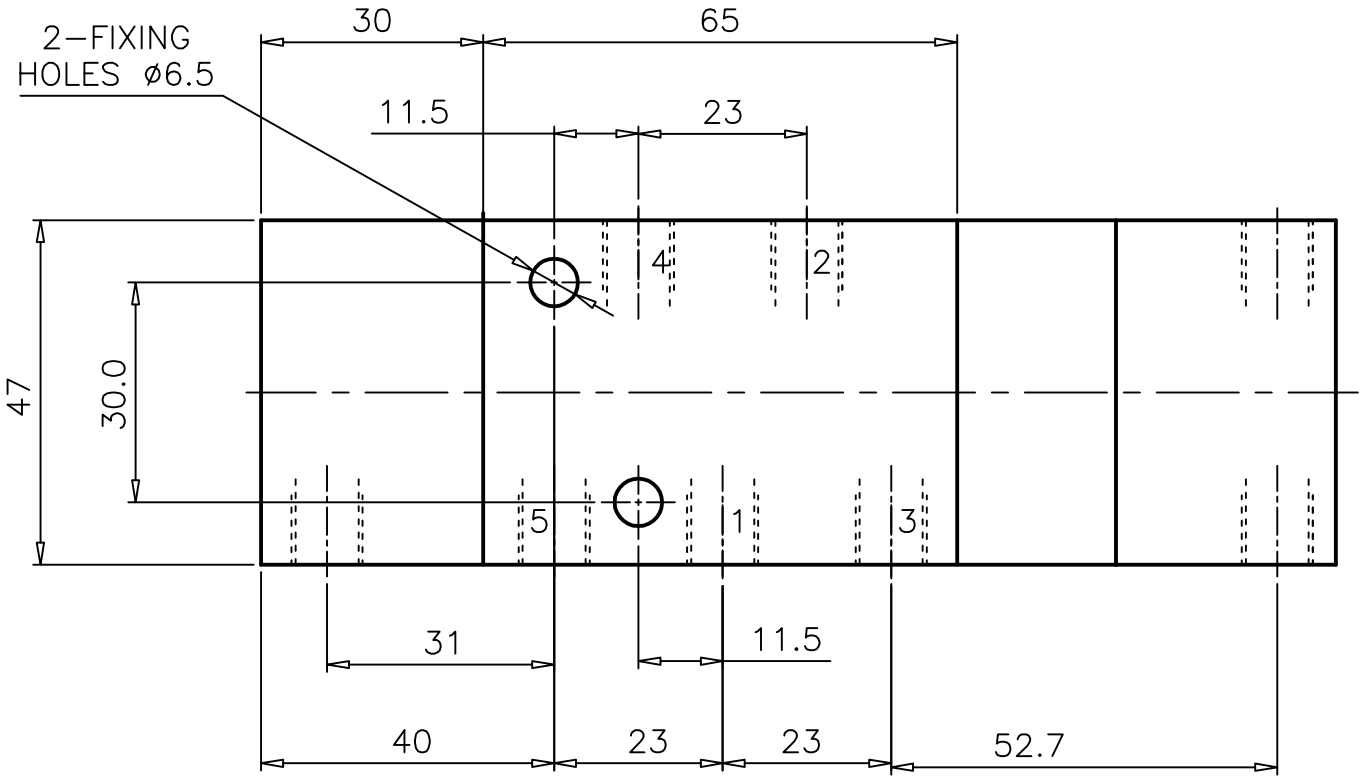
Operating Pressure : 0-10 bar \*

Operating Temperature : +5°C to +70°C

Pilot Pressure : 3-10 bar



\* Consult our Technical service for use below +2°C



\* CONSULT OUR TECHNICAL SERVICE FOR LOW PRESSURE AND VACUUM

ALL DIMENSIONS ARE IN mm

DRAWN	SREENIVAS.M	16.04.2005
CHECKED		
APPROVED		